

SpringCharts Demo for Windows Installation Guide

Revision 1.5
March 2004

© 2001-2004 Spring Medical Systems, Inc.

Contents

Overview.....	3
System Requirements.....	3
Obtaining and installing the Java Runtime Environment (JRE) 1.4.2.....	3
Installing SpringCharts EMR Demo.....	4
SpringCharts EMR Demo Installation Overview.....	4
Installing SpringCharts EMR Demo details.....	5
Installation Assistance.....	6

Overview

SpringCharts EMR is an electronic medical records software suite based on the latest industry standard Java technology. The Demo is a version of SpringCharts adapted to run on one computer. It comes with sample patients, diagnoses, and procedures. The Demo also features on-screen annotations that will take a user through the key functions of the system. Thus, users can explore the system on their own, or have a more structured experience with its key features and functions. Users cannot modify the Practice settings in the Demo, but all other features are enabled.

To install SpringCharts EMR Demo for use on a single computer, please refer to the instructions in the **Installing SpringCharts EMR Demo** section below.

System Requirements

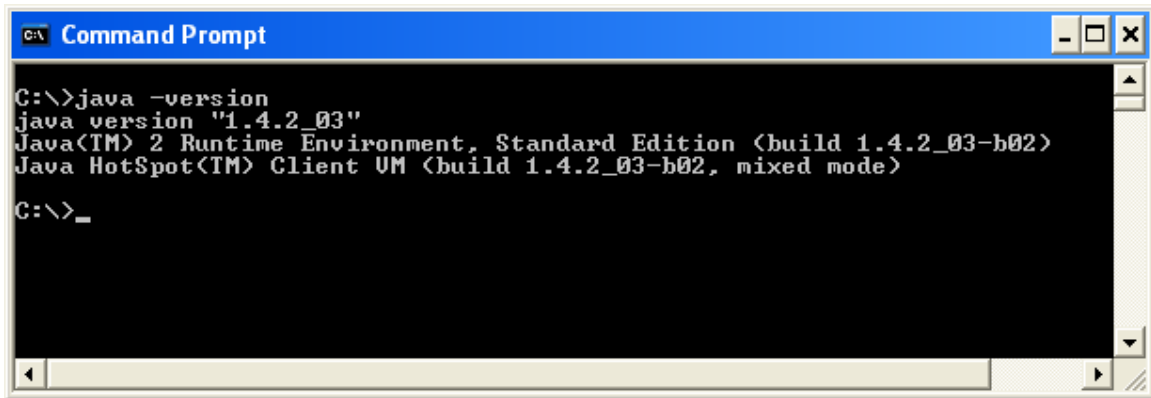
Overall system requirements are:

- A TCP/IP network (standard Ethernet network).
- A printer.
- Network access to a computer with a CD-ROM drive.
- 256 MB of memory.
- A 400 MHz, or faster, processor.
- 90 MB available disk space.
- Java Runtime Environment (JRE) 1.4.2 or later must be installed on all Windows or Linux computers that run SpringCharts EMR. Mac OS X already has the correct Java support for SpringCharts. (See **Obtaining and installing the Java Runtime Environment** section below.)
 - 100 MB of disk space is required for the JRE installation.
- A computer running one of the following operating systems: Windows 98 or above, MacOS X or above, or Linux Red Hat Version 7 or above.

Obtaining and installing the Java Runtime Environment (JRE) 1.4.2

The Java Runtime Environment is distributed free of charge. Check to see if the computer already has the JRE installed, and if so, which version:

- Go to a command prompt (Click on Start>Run, type *cmd* into the text box, and click on OK). At the command prompt, type *java -version* and press Enter. There should be a space between “*java*” and “*-version*”. The results should look like this:



```
C:\>java -version
java version "1.4.2_03"
Java(TM) 2 Runtime Environment, Standard Edition (build 1.4.2_03-b02)
Java HotSpot(TM) Client VM (build 1.4.2_03-b02, mixed mode)

C:\>_
```

If the JRE is not installed, or the version is older (below) 1.4.2, it may be installed from the SpringCharts Installation CD:

- It may be necessary to log in to your computer as a user with Administrator privileges.
- Put the SpringCharts Installation CD in the server's CD-ROM drive.
Note: If you do not have a CD-ROM drive on your computer, there are two options. First, through Windows networking, share the CD-ROM drive on another computer connected to your network, and install off of that CD-ROM drive.
The other method is to share a folder across your network and copy the installation files to that folder. Then, from your computer, access the shared folder to install SpringCharts Server. In either case, it is advisable to consult your network technician for assistance.
- Go to the folder \JRE Folder\JRE_Windows\ on the SpringCharts Installation CD.
- Double-click on: j2re-1_4_2_03-windows-i586-p.exe

Or, alternatively, the JRE may be downloaded from the Spring Medical Systems website. See the Java Info section for further instructions.

Installing SpringCharts EMR Demo

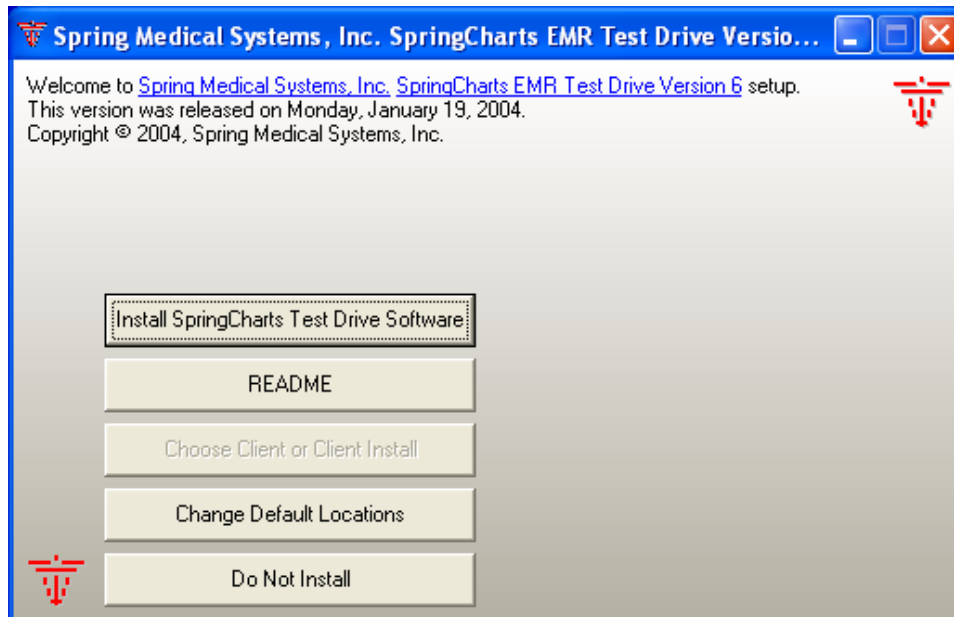
SpringCharts EMR Demo Installation Overview

The SpringCharts installation procedure has just a few easy steps: verify hardware requirements, ensure the JRE is at the correct version, and install SpringCharts EMR Demo. When these steps are completed successfully, you may begin using SpringCharts.

Installing SpringCharts EMR Demo details

To install SpringCharts EMR Demo:

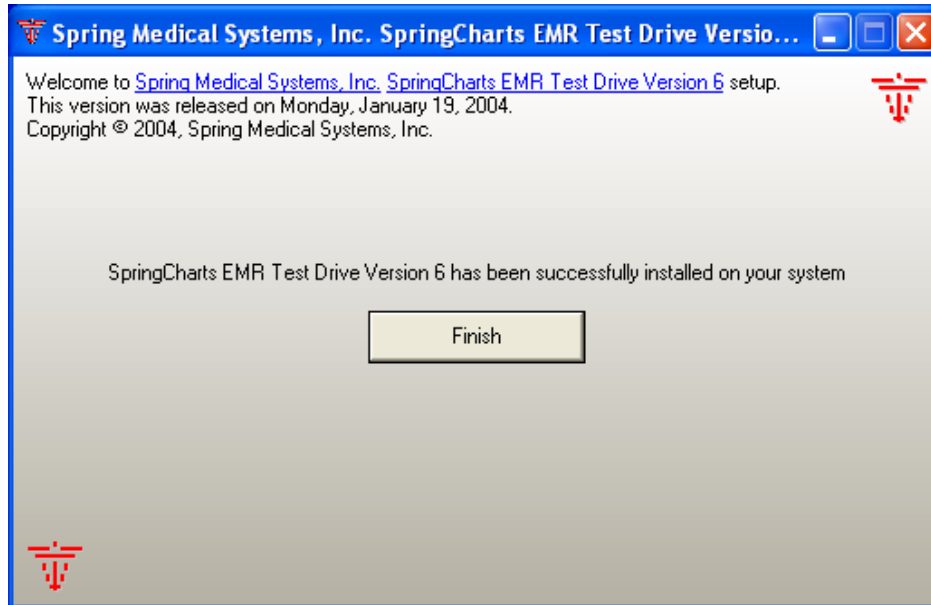
1. Obtain the SpringChartsDemoSetup.exe program. It can be found either on the SpringCharts Installation CD, or via download.
 - From the Installation CD:
 - a) Put the SpringCharts Installation CD in the computer's CD-ROM drive.
 - b) Locate the SpringChartsDemoSetup.exe file in the 'Demo\Windows Programs' folder.
 - Or, via download:
 - a) Go to the Spring Medical Systems website, and look for the Demo.
 - b) Follow the instructions there to download and unzip the file.
2. Double-click on the SpringChartsDemoSetup.exe program to launch the installation program. You should see a screen similar to this:



3. SpringCharts program files will be installed in the default location of C:\Program Files\SCDemo. This is the recommended installation location. To accept this default, simply click on the 'Install SpringCharts Demo Software' button.
 - If a different installation location other than the default is desired, click on the 'Change Default Locations' button. Enter the new locations, and click 'Proceed'. Next (if the Default Locations were changed), a

list of the SpringCharts folders that will be installed is shown. Click on 'Proceed' to continue.

4. Read and accept the license agreement. The installation will begin running at this point.
5. After the files have been successfully installed, a final screen will appear:



6. Click on 'Finish', and the installation is complete. To start running SpringCharts EMR Demo, you can either:
 - Go to the folder where the SpringCharts Demo software is installed (C:\Program Files\SCDemo if the default location was used), and double-click on the 'SpringCharts' application.
 - Or, double-click on the desktop icon labeled 'SpringCharts'.

Installation Assistance

For help with downloading, installing, or running the Demo, please email or call us at:

info@SpringMedical.com

(281)-360-9966