

SpringCharts Demo for Mac Installation Guide

Revision 1.5
March 2004

© 2001-2004 Spring Medical Systems, Inc.

Contents

Overview.....	3
System Requirements.....	3
Installing SpringCharts EMR Demo.....	3
SpringCharts EMR Demo Installation Overview	3
Installing SpringCharts EMR Demo details	4
Installation Assistance	7

Overview

SpringCharts EMR is an electronic medical records software suite based on the latest industry standard Java technology. The Demo is a version of SpringCharts adapted to run on one computer. It comes with sample patients, diagnoses, and procedures. The Demo also features on-screen annotations that will take a user through the key functions of the system. Thus, users can explore the system on their own, or have a more structured experience with its key features and functions. Users cannot modify the Practice settings in the Demo, but all other features are enabled.

To install SpringCharts EMR Demo for use on a single computer, please refer to the instructions in the **Installing SpringCharts EMR Demo** section below.

System Requirements

Overall system requirements are:

- A TCP/IP network (standard Ethernet network).
- A printer.
- Network access to a computer with a CD-ROM drive.
- 256 MB of memory.
- A 400 MHz, or faster, processor.
- 90 MB available disk space.
- Java Runtime Environment (JRE) 1.4.2 or later must be installed on all computers that run SpringCharts EMR. Mac OS X already has the correct Java support for SpringCharts.
- A computer running one of the following operating systems: Windows 98 or above, MacOS X (10.2 or 10.3) or above, or Linux Red Hat Version 7 or above.

Installing SpringCharts EMR Demo

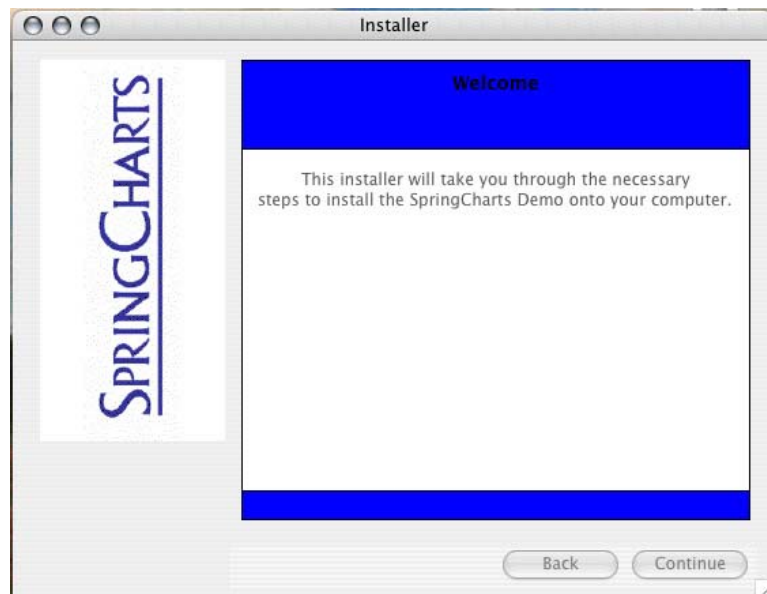
SpringCharts EMR Demo Installation Overview

The SpringCharts installation procedure has just a few easy steps: verify hardware requirements, install SpringCharts EMR Demo, and set the SpringCharts Preferences. When these steps are completed successfully, you may begin using SpringCharts.

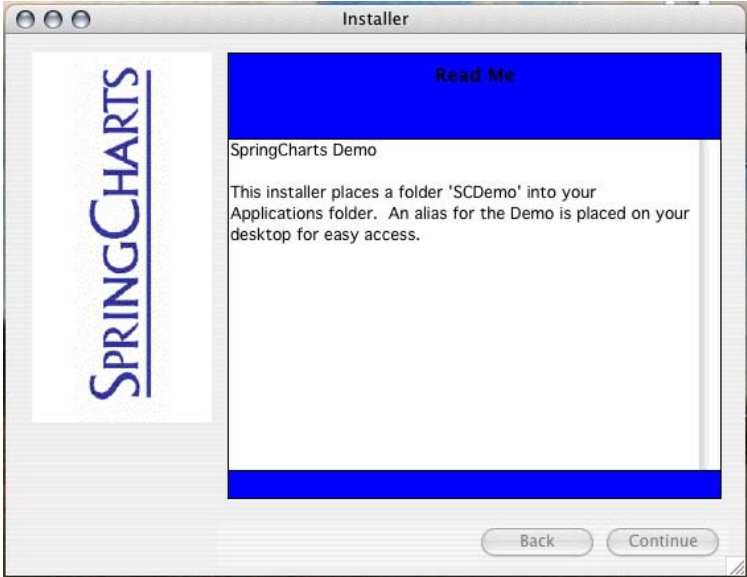
Installing SpringCharts EMR Demo details

To install SpringCharts EMR Demo:

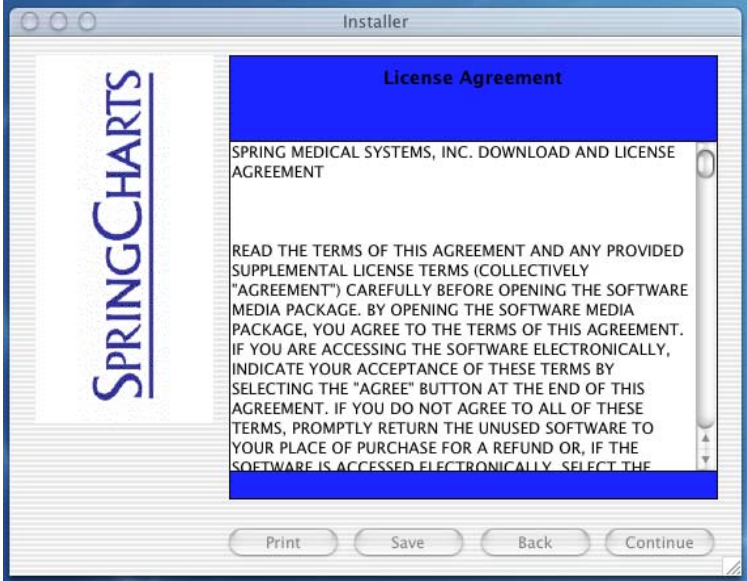
1. Obtain the 'SpringCharts Demo Installer' program. It can be found either on the SpringCharts Installation CD, or via download.
 - From the SpringCharts Installation CD:
 - a) Put the SpringCharts Installation CD in the computer's CD-ROM drive.
 - b) Locate the 'SpringCharts Demo.sit' file in the 'Demo : Mac Programs' folder.
 - c) Unstuff it onto your Desktop (double-click on it, and choose Desktop as the location). It contains the 'SpringCharts Demo Installer' program.
 - Or, via download:
 - a) Go to the Spring Medical Systems website, and look for the Demo.
 - b) Follow the instructions there to download and unstuff the file.
2. Double-click on the 'SpringCharts Demo Installer' program to launch the installation program.
3. An 'Installing SpringCharts' informational window will come up. Click on 'OK', and then you will see this screen:



4. Click on 'Continue'. Another informational window will appear:



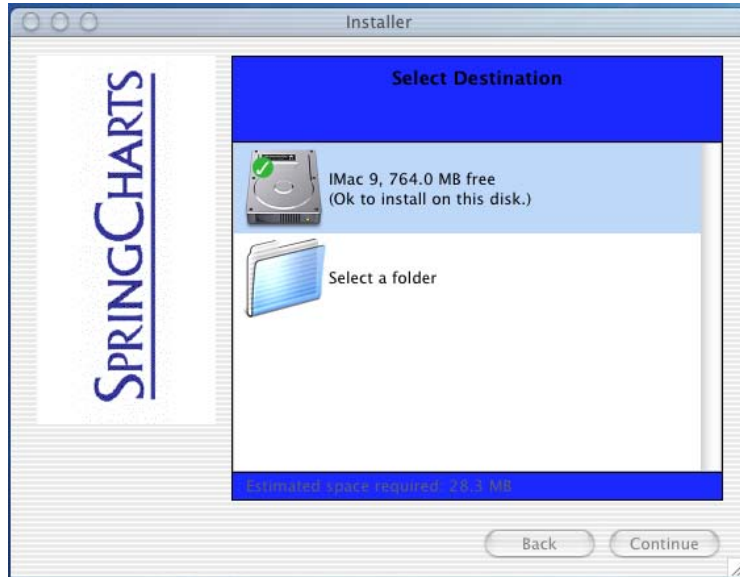
- 5. Please read this information carefully, and then click on 'Continue'.
- 6. The license agreement will be displayed:



- 7. Please read it, and click on 'Continue'. When the next smaller window appears, click on 'Agree' to accept the license agreement.



8. Then a screen will be displayed which indicates the location into which the SpringCharts files will be installed. SpringCharts program files will be installed by default under Applications, in a folder named SCDemo. This is the recommended installation location. To accept this default, click on the option that identifies your computer's disk name, and then click on 'Continue'.
 - If a different installation location other than the default is desired, click on 'Select a folder', and 'Continue'. Enter the new locations, and click 'Continue' again.

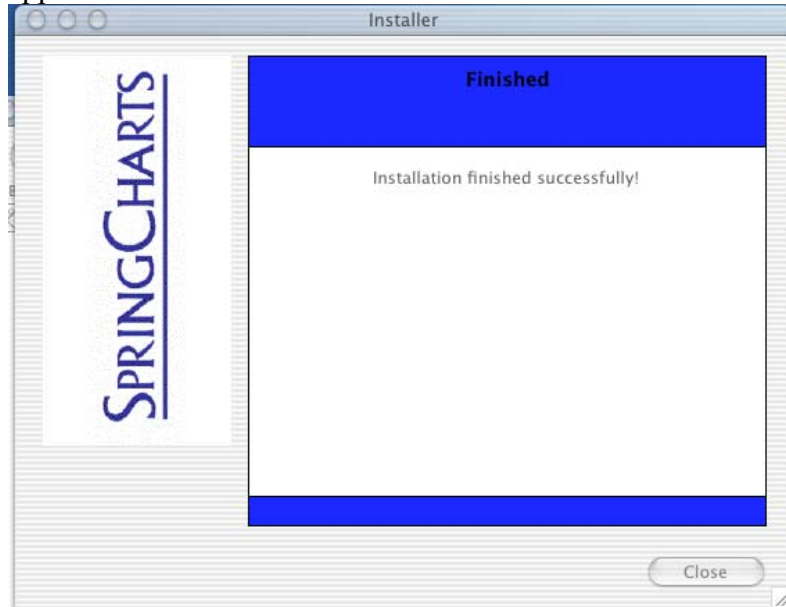


9. The next screen will displayed:



10. Click on Install, and the installation will begin.

11. After the files have been successfully installed, the following screen will appear:



12. Click on 'Close', and the installation is complete. To start running SpringCharts EMR Demo, you can either:

- Go to the folder where the SpringCharts Demo software is installed (under Applications, in a folder named SCDemo, if the default was used), double-click on the 'SpringChartsDemo' application.
- Or, double-click on the desktop alias labeled "SpringCharts Demo".

Installation Assistance

For help with downloading, installing, or running the Demo, please email or call us at:

info@SpringMedical.com

(281)-360-9966