

SpringCharts for Windows Upgrade Guide

Revision 1.5
March 2004

© 2001-2004 Spring Medical Systems, Inc.

Contents

Overview.....	3
System Requirements.....	3
Verifying the Java Runtime Environment (JRE) 1.4.2.....	4
Upgrading SpringCharts Networking Option.....	5
SpringCharts Networking Option Upgrade Overview.....	5
Upgrading SpringCharts Server (Networking Option) details.....	5
Upgrading SpringCharts Client (Networking Option) details.....	7
Upgrading SpringCharts Single Computer Version.....	10
SpringCharts Single Computer Version Upgrade Overview.....	10
Upgrading SpringCharts Single Computer Version details.....	10
Installation Assistance.....	12

Overview

SpringCharts EMR is an electronic medical records software suite based on the latest industry standard Java technology. SpringCharts is available in two different system configurations: Single Computer, or Networking Option. The Upgrade instructions vary slightly for the two configurations, and appear later in this Guide.

The instructions in this document assume that there is an existing version of SpringCharts installed on the computer(s). The Upgrade instructions only update SpringCharts. If you are a new user, you must do a complete install of SpringCharts. New installation instructions are beyond the scope of this Guide.

System Requirements

Overall system requirements are:

- A TCP/IP network (standard Ethernet network).
- A printer.
- To use the integrated Email functions, an Internet connection is required (cable modem, ISDN, DSL).
- Network access to a computer with a CD-ROM drive.
- 256 MB of memory on each computer running SpringCharts.
- Java Runtime Environment (JRE) 1.4.2 or later must be installed on all Windows or Linux computers which run SpringCharts EMR. Mac OS X already has the correct Java support for SpringCharts. (See Obtaining and installing the Java Runtime Environment section below.)
- 100 MB of disk space is required for the JRE installation.

The minimum requirements for **SpringCharts Single Computer Version** are:

- A 400 MHz, or faster, processor.
- 400 MB available disk space.
- A computer running one of the following operating systems: Windows 98 or above, MacOS X or above, or Linux Red Hat Version 7 or above.
- An activation key code. The first time SpringCharts is run, it must be activated with a valid activation key. The key should have been received at the time of purchase. If not, please contact your sales representative.

The minimum Server requirements for **SpringCharts Networking Option** are:

- A 400 MHz, or faster, processor.
- 400 MB available disk space.
- Two or more computers running the following operating systems: Windows 98 or above, MacOS X or above, or Linux Red Hat Version 7 or above. (The computers do not need to be running the same operating system.)
- An activation key code. The first time SpringCharts is run, it must be activated with a valid activation key. The key should have been received at the time of purchase. If not, please contact your sales representative.

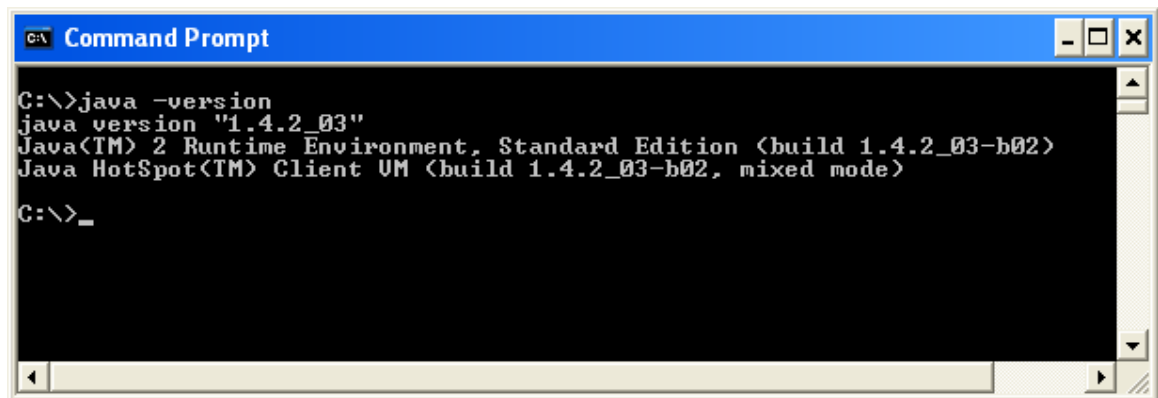
The minimum Client requirements for **SpringCharts Networking Option** are:

- A 300 MHz, or faster, processor.
- 5.5 MB available disk space.
- One or more computers running the following operating systems: Windows 98 or above, MacOS X or above, or Linux Red Hat Version 7 or above. (The computers do not need to be running the same operating system.)

Verifying the Java Runtime Environment (JRE) 1.4.2

The Java Runtime Environment is distributed free of charge. Check to see if the computer has an up-to-date version of the JRE installed:

- Go to a command prompt (Click on Start>Run, type *cmd* into the text box, and click on OK). At the command prompt, type *java -version* and press Enter. There should be a space between “*java*” and “*-version*”. The results should look like this:



```
C:\>java -version
java version "1.4.2_03"
Java(TM) 2 Runtime Environment, Standard Edition (build 1.4.2_03-b02)
Java HotSpot(TM) Client VM (build 1.4.2_03-b02, mixed mode)
C:\>_
```

If the JRE version is older (below) 1.4.2, it must be updated. To download the JRE:

- It may be necessary to log in to your computer as a user with Administrator privileges.
- Download the JRE file:
http://www.SpringMedical.com/Distribution/JRE/j2re-1_4_2_03-windows-i586-p.exe
- Double-click on the JRE file (j2re-1_4_2_03-windows-i586-p.exe) and follow the installation instructions.

Upgrading SpringCharts Networking Option

SpringCharts Networking Option Upgrade Overview

The SpringCharts Upgrade procedure has just a few easy steps: verify hardware requirements, ensure the JRE is at the correct version, upgrade SpringCharts Server on the server, and upgrade SpringCharts Client on all the client computers. When these steps are completed successfully, you may begin using SpringCharts.

Upgrading SpringCharts Server (Networking Option) details

Warning!

DO NOT proceed with these instructions until you have performed a Backup of your SpringCharts files.

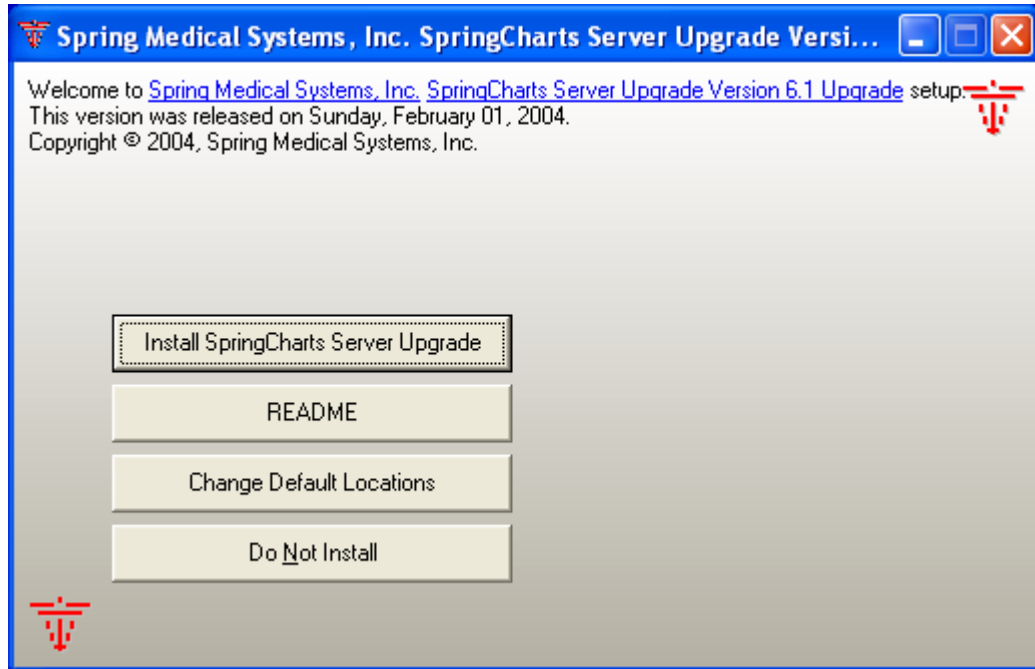
To upgrade SpringCharts Server (Networking Option):

1. Login as a user with Administrator privileges.
2. Quit all SpringCharts Server and SpringCharts Client programs.
3. Find the current location of SpringCharts Server files on your computer:
 - For some early versions of SpringCharts Version 4.5, the default installation location was C:\Program Files\SCServer\SCServer. If you have this configuration, please contact Spring Medical Systems Support for assistance in updating the SpringCharts directory structure.
 - For SpringCharts Version 5.0 and above, the default installation location was C:\Program Files\SCServer. This is the recommended directory structure.

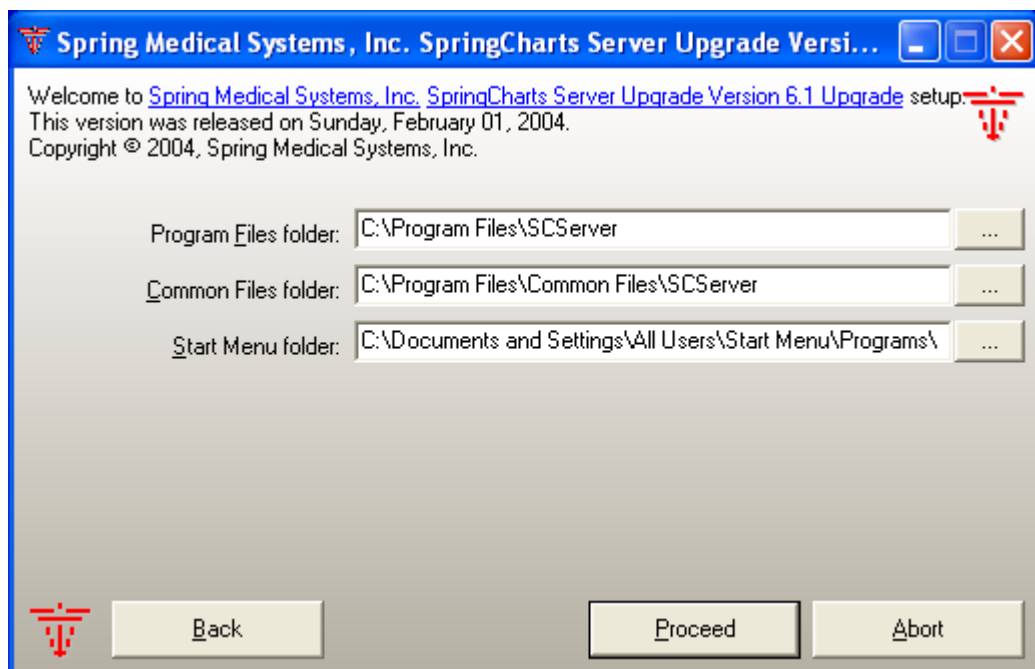
Make certain you know the location of your current SpringCharts Server files before continuing with this Upgrade.

4. Obtain the SpringCharts Server Upgrade software by either:

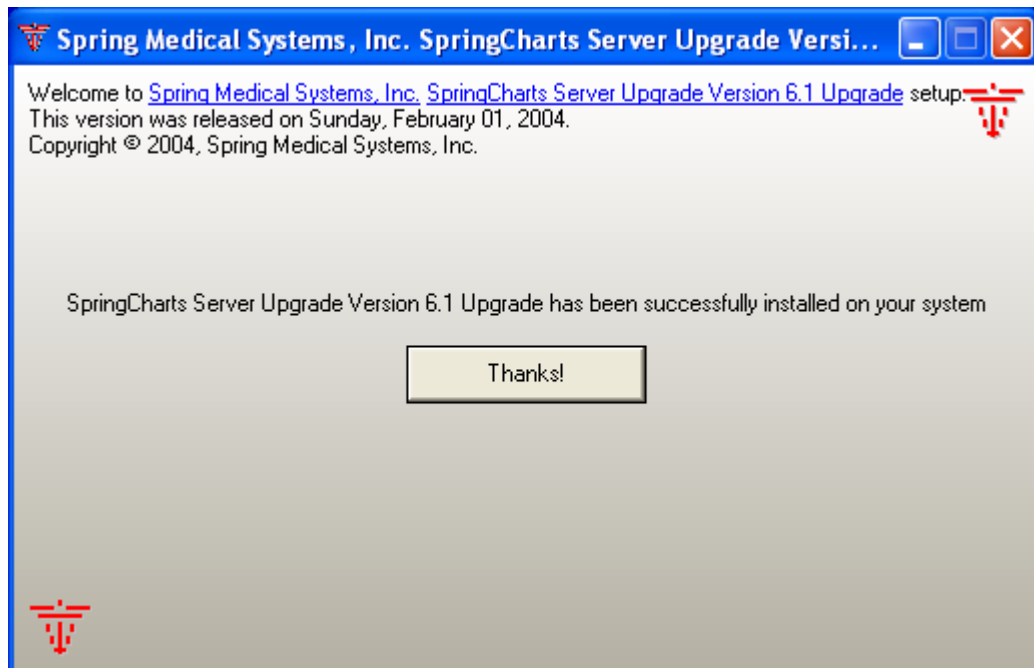
- Downloading the SC65_ServerUpg_win.zip file. Then unzipping the downloaded file. One file is enclosed: SCServerUpgrade.exe.
 - Or, locating the SCServerUpgrade.exe program on the SpringCharts Installation CD. It is located in the 'Upgrade Installations\Windows Programs' folder.
5. Double-click on SCServerUpgrade.exe. You will see a screen similar to this:



6. Click on the 'Change Default Locations' button. You will see:



7. Verify that the location listed in the 'Program Files folder' box matches the current location of your SpringCharts Server files. If not, enter the current SpringCharts Server files location into the 'Program Files folder' box. Accept the defaults in the boxes labeled 'Common Files folder' and 'Start Menu folder'. Click 'Proceed'.
8. Next, a list of the SpringCharts folders that will be installed is shown. Click on 'Proceed' to continue.
9. Read and accept the license agreement. The Upgrade installation will begin at this point.
10. After the files have been successfully installed, a final screen will appear:



11. Click on 'Thanks!' and the Server upgrade is complete. Before you can begin running SpringCharts, all the SpringCharts Clients must also be Upgraded to the same version of SpringCharts as the Server. To Upgrade the Clients, see the next section titled **Upgrading SpringCharts Client (Networking Option) details**.

Upgrading SpringCharts Client (Networking Option) details

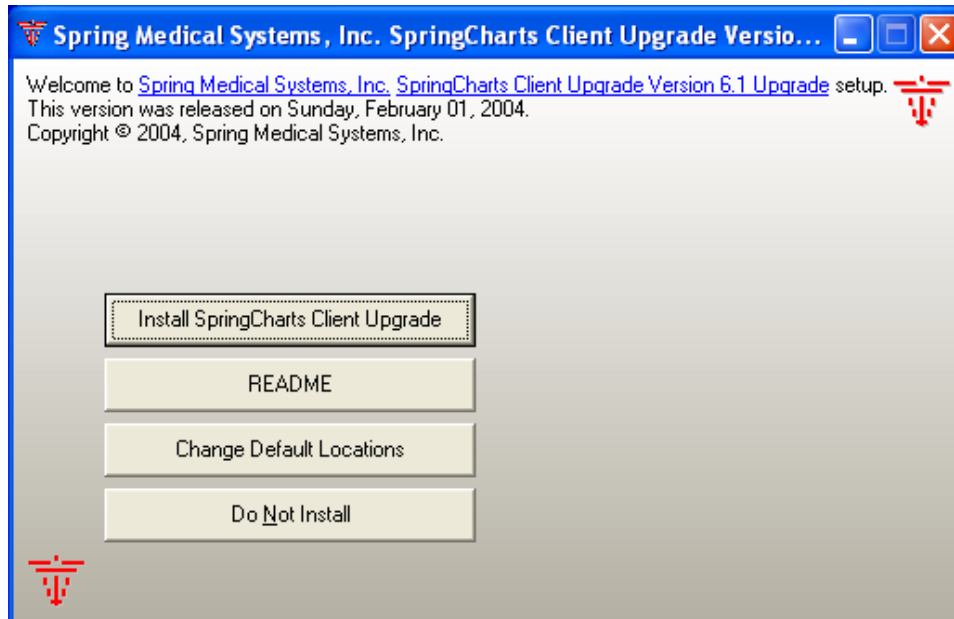
To upgrade SpringCharts Client (Networking Option):

1. Login as a user with Administrator privileges.
2. Quit all SpringCharts Server and SpringCharts Client programs.

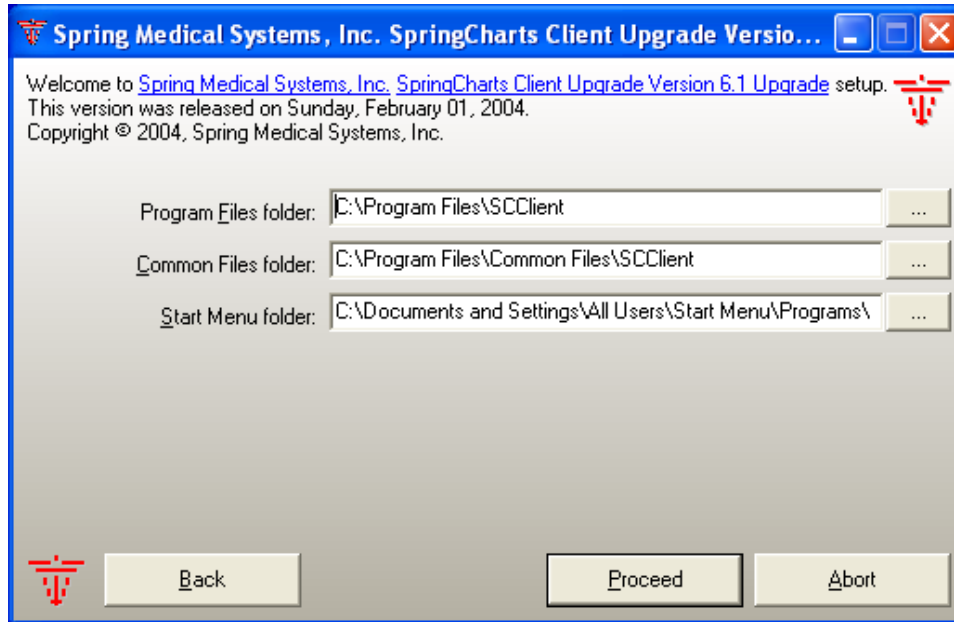
3. Find the current location of SpringCharts Client files on your computer:
 - For some early versions of SpringCharts Version 4.5, the default installation location was C:\Program Files\SCClient\SCClient. If you have this configuration, please contact Spring Medical Systems Support for assistance in updating the SpringCharts directory structure.
 - For SpringCharts Version 5.0 and above, the default installation location was C:\Program Files\SCClient. This is the recommended directory structure.

Make certain you know the location of your current SpringCharts Client files before continuing with this Upgrade.

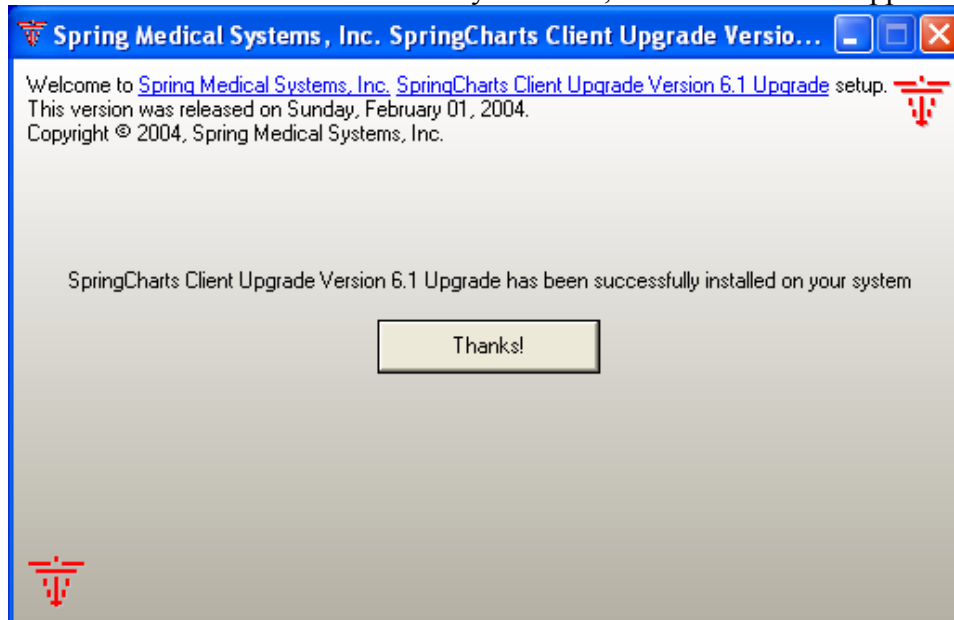
4. Obtain the SpringCharts Client Upgrade software by either:
 - Downloading the SC65_ClientUpg_win.zip file. Then unzipping the downloaded file. One file is enclosed: SCClientUpgrade.exe.
 - Or, locating the SCClientUpgrade.exe program on the SpringCharts Installation CD. It is located in the 'Upgrade Installations\Windows Programs' folder.
5. Double-click on SCClientUpgrade.exe. You will see a screen similar to this:



6. Click on the 'Change Default Locations' button. You will see:



7. Verify that the location listed in the 'Program Files folder' box matches the current location of your SpringCharts Client files. If not, enter the current SpringCharts Client location into the 'Program Files folder' box. Accept the defaults in the boxes labeled 'Common Files folder' and 'Start Menu folder'. Click 'Proceed'.
8. Next, a list of the SpringCharts folders that will be installed is shown. Click on 'Proceed' to continue.
9. Read and accept the license agreement. The Upgrade installation will begin at this point.
10. After the files have been successfully installed, a final screen will appear:



11. Click on 'Thanks!' and the Client upgrade is complete.

Upgrading SpringCharts Single Computer Version

SpringCharts Single Computer Version Upgrade Overview

The SpringCharts Upgrade procedure has just a few easy steps: verify hardware requirements, ensure the JRE is at the correct version, and upgrade SpringCharts. When these steps are completed successfully, you may begin using SpringCharts.

Upgrading SpringCharts Single Computer Version details

Warning!

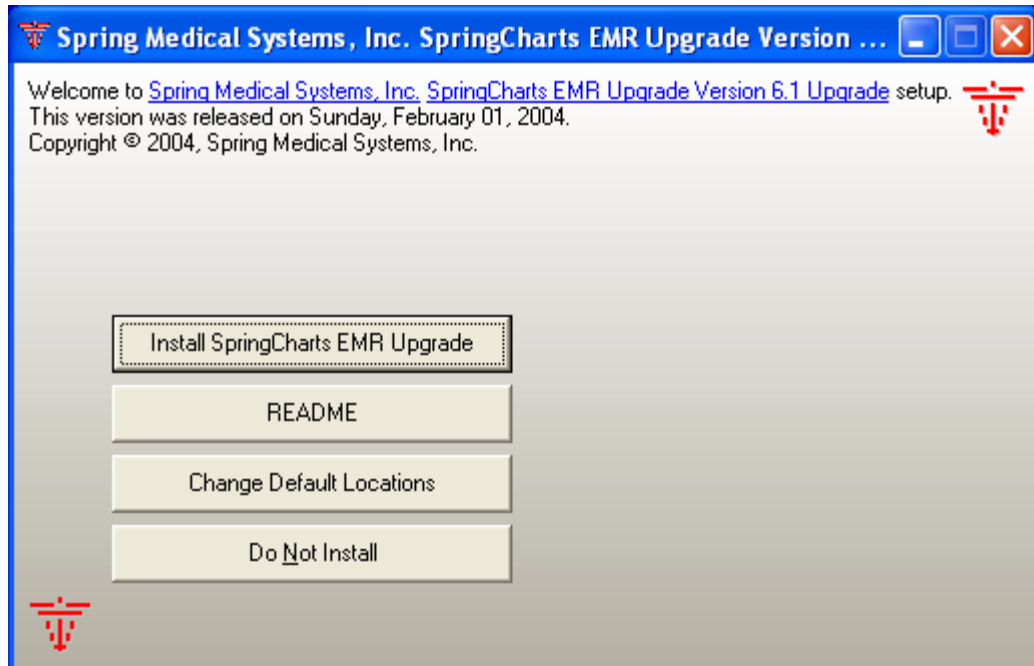
DO NOT proceed with these instructions until you have performed a Backup of your SpringCharts files.

To upgrade SpringCharts Single Computer Version:

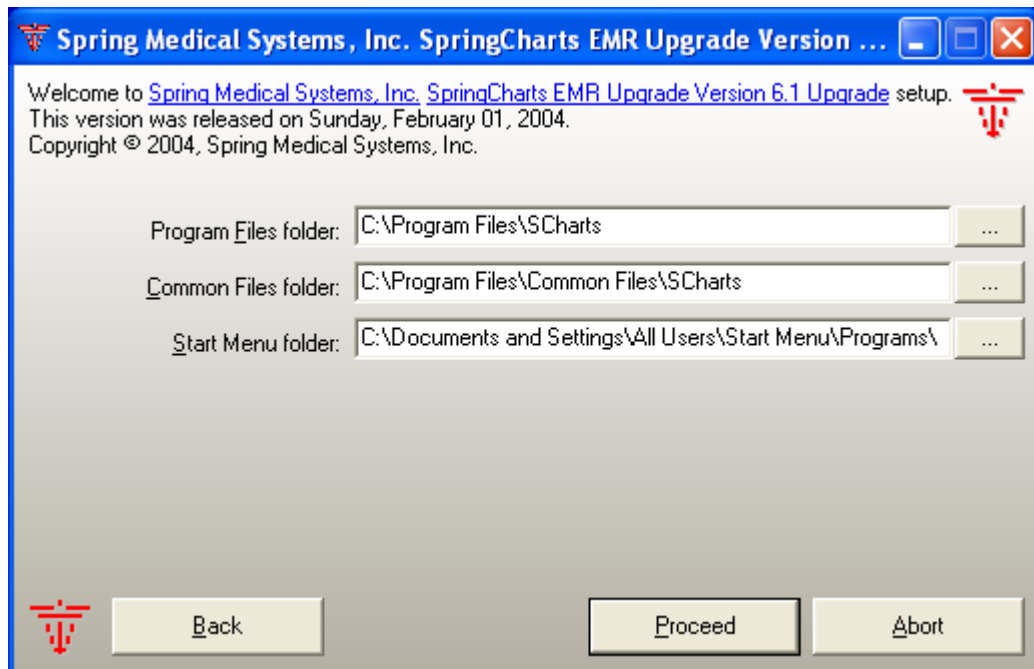
1. Log in as a user with Administrator privileges.
2. Quit all SpringCharts programs.
3. Find the current location of SpringCharts files on your computer:
 - For some early versions of SpringCharts Version 4.5, the default installation location was C:\Program Files\SCharts\SCharts. If you have this configuration, please contact Spring Medical Systems Support for assistance in updating the SpringCharts directory structure.
 - For SpringCharts Version 5.0 and above, the default installation location was C:\Program Files\SCharts. This is the recommended directory structure.

Make certain you know the location of your current SpringCharts files before continuing with this Upgrade.

4. Obtain the SpringCharts Single Computer Version Upgrade software by either:
 - Downloading the SC65_SCVUpg_win.zip file. Then unzipping the downloaded file. One file is enclosed: SpringChartsSCVUpgrade.exe.
 - Or, locating the SpringChartsSCVUpgrade.exe program on the SpringCharts Installation CD. It is located in the 'Upgrade Installations\Windows Programs' folder.
5. Double-click on SpringChartsSCVUpgrade.exe. You will see the following screen:

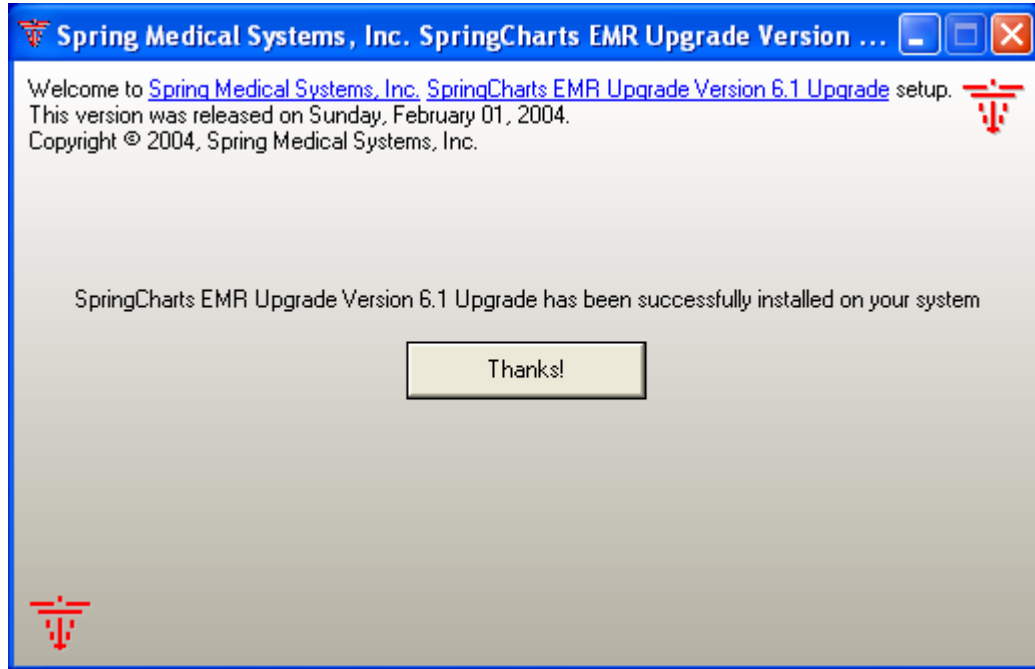


6. Click on the 'Change Default Locations' button. You will see this screen:



7. Verify that the location listed in the 'Program Files folder' box matches the current location of your SpringCharts files. If not, enter the current SpringCharts files location into the 'Program Files folder' box. Accept the defaults in the boxes labeled 'Common Files folder' and 'Start Menu folder'. Click 'Proceed'.

8. Next, a list of the SpringCharts folders that will be installed is shown. Click on 'Proceed' to continue.
9. Read and accept the license agreement. The Upgrade installation will begin at this point.
10. After the files have been successfully installed, the following screen will appear:



11. Click on 'Thanks!' and the SpringCharts upgrade is complete.

Installation Assistance

If you purchased SpringCharts from a reseller, please contact your reseller for assistance.

If you purchased SpringCharts directly from Spring Medical Systems, Inc., please email or call us at:

Customer Support: Support@SpringMedical.com

(281) 376-8567